

Cross-Sector Partnerships: *Community Development as a Partner for Health Equity*



Build Healthy
Places Network

Daniel Lau, MPH

Ohio Health Policy Institute

April 18, 2018



THE BUILD HEALTHY PLACES NETWORK

Connect partners across health & community development

Provide access to research, best practices, innovations, and models that demonstrate what works

Highlight the health-related value of community development investments

Encourage and enable measurement of health-related impact

Outline for Today



OUTLINE

What are the Problems?

What is Community Development?

Innovative Cross-Sector Partnerships

Resources for Next Steps



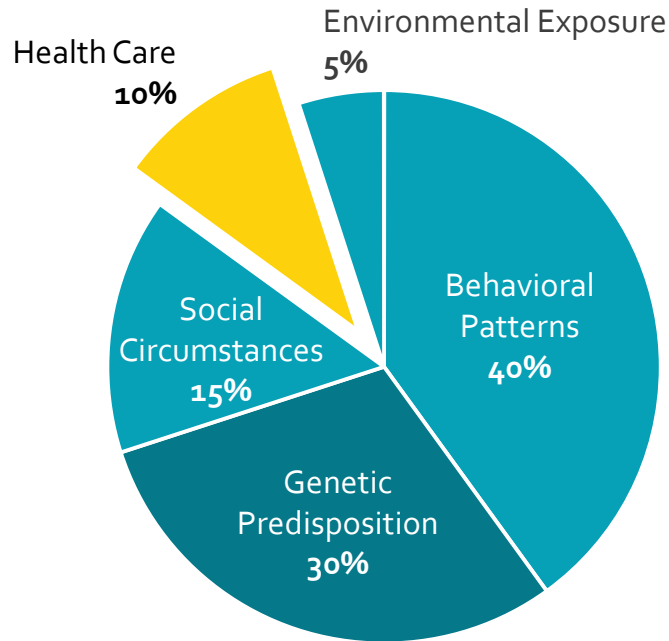
TAKEAWAYS

-
- Community Development is a Sector
-
- Community Development is Well-Positioned to Serve as a Partner in Health Equity
-
- Build Healthy Places Network is a Resource for Cross-Sector Collaboration

What are the Problems?



CONTRIBUTIONS TO PREMATURE DEATH



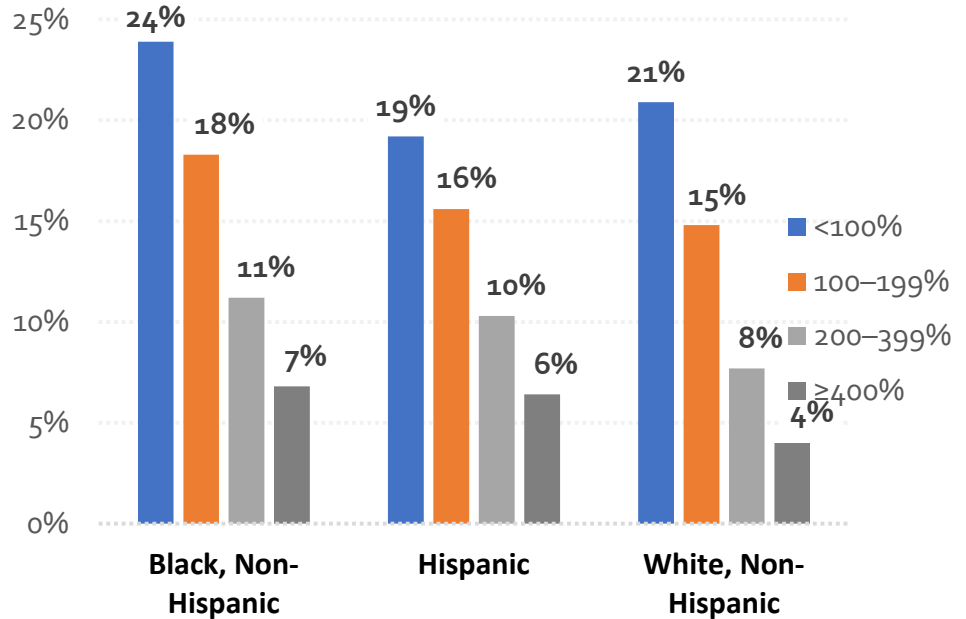
McGinnis MJ, Williams-Russo P, Knickman JR. *Health Affairs* 2002



POOR HEALTH ACROSS ALL RACIAL AND ETHNIC GROUPS

Percent of adults with poor health

By income (% of Federal poverty line)

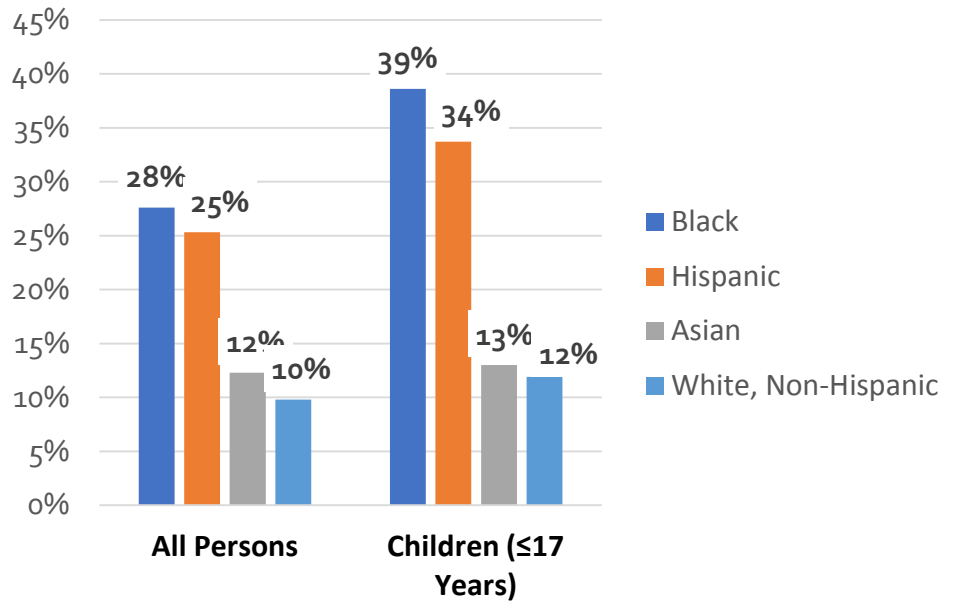




...BUT POVERTY IS CONCENTRATED

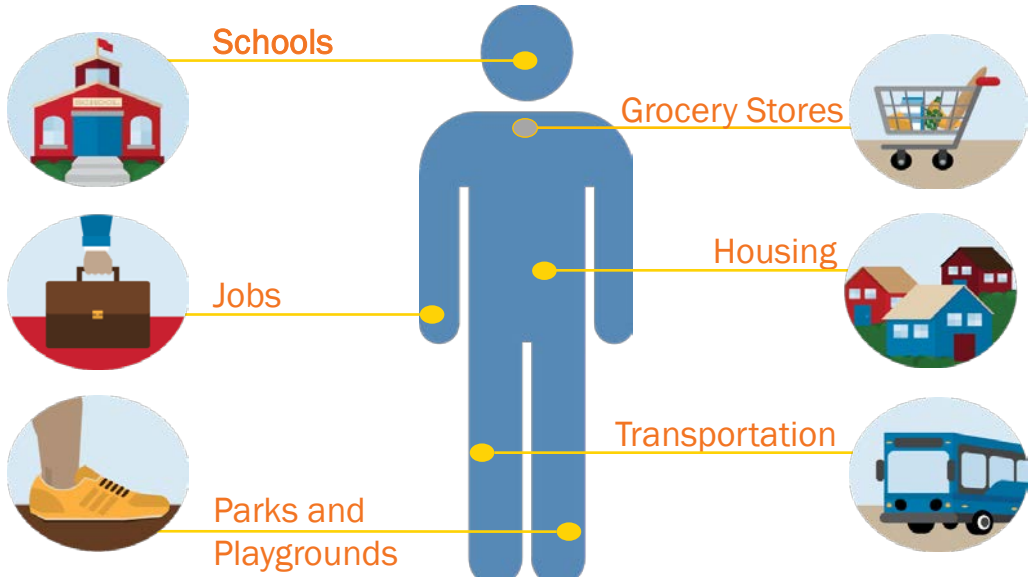
Percent of people in poverty

By racial or ethnic group





PEOPLE GET SICK BECAUSE OF THEIR SOCIAL AND PHYSICAL ENVIRONMENTS

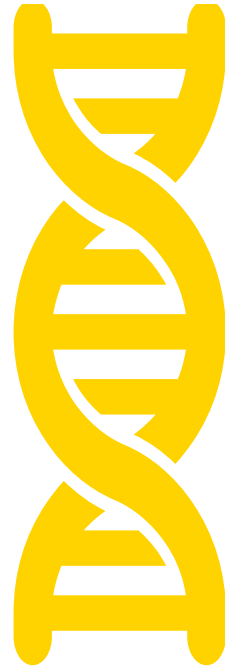




IN DETERMINING YOUR HEALTH...

900001

>





HEALTH DISPARITIES

Short distances,
large differences

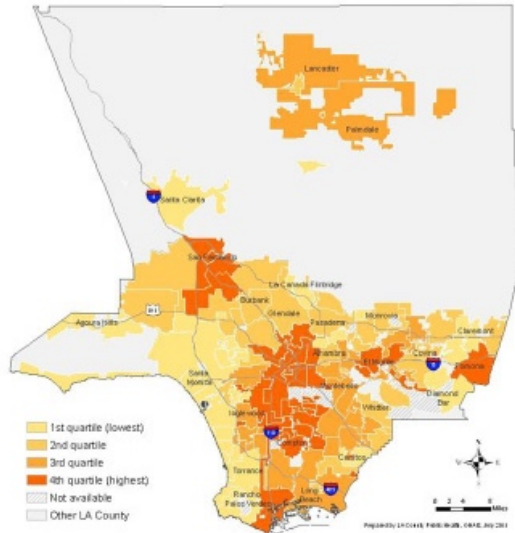
New Orleans, LA



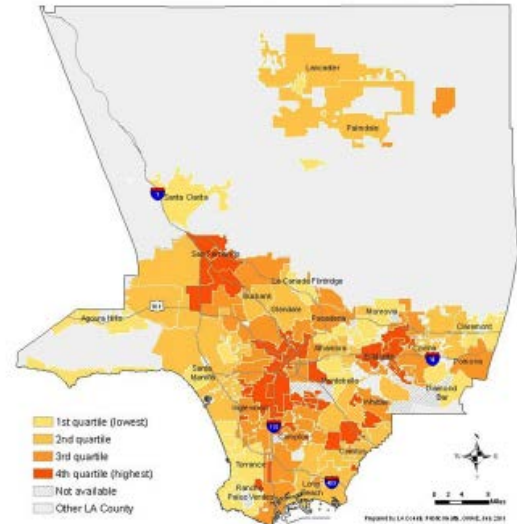


COMMUNITY DEVELOPMENT & HEALTH WORK SIDE-BY-SIDE

Economic hardship by city



Childhood obesity by city



Los Angeles County



 WHERE ARE WE NOW?: High costs

\$3.5 trillion
per year

>80% of costs are due
to chronic disease

Most chronic disease
is preventable

Most chronic disease
happens to
low-income people in
low-income places



WHERE ARE WE NOW?: Inefficient investments

> \$1 trillion
per year

Spent on avoidable chronic disease
occurring in low-income neighborhoods

What is Community Development?



COMMUNITY DEVELOPMENT IS IN THE ZIP CODE IMPROVEMENT BUSINESS



BAKER RIPLEY CENTER, HOUSTON, TX



ZIP CODE IMPROVEMENT AT THE NEIGHBORHOOD LEVEL



PURPOSE
BUILT
COMMUNITIES



East Lake Meadows, Atlanta, GA



ZIP CODE IMPROVEMENT AT THE NEIGHBORHOOD LEVEL



East Lake Meadows, Atlanta, GA

COMMUNITY QUARTERBACK





VILLAGES OF EAST LAKE, ATLANTA, GEORGIA





VILLAGES OF EAST LAKE, ATLANTA, GEORGIA



PURPOSE
BUILT
COMMUNITIES





HOPE SF supports strong, vibrant communities

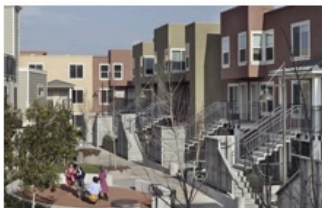


HOPE SF will revitalize four of San Francisco's severely distressed public housing sites by creating thriving and mixed-income communities.



HOPE SF: Revitalizing Communities, Transforming Lives

HOPE SF is not just about rebuilding public housing. The program borrows from the most successful national models to focus on revitalizing the whole community, not just on constructing new buildings. HOPE SF will create opportunities to transform residents' lives, not just their homes, by investing in the schools, services, safety, and support needed for success. [Find out more »](#)



HOPE SF Launches First Site: Hunters View

At Hunters View, obsolete buildings are in dire need of replacement. HOPE SF will replace all existing 267 public housing units and add additional affordable and market-rate homes to the community. The development team, composed of John Stewart Company, Ridge Point Non-Profit Housing Corporation, and Devine & Gong, Inc., began construction in January 2010. [Find out more »](#)





How much money? And where does it come from??

OVER \$150 BILLION DOLLARS ANNUALLY

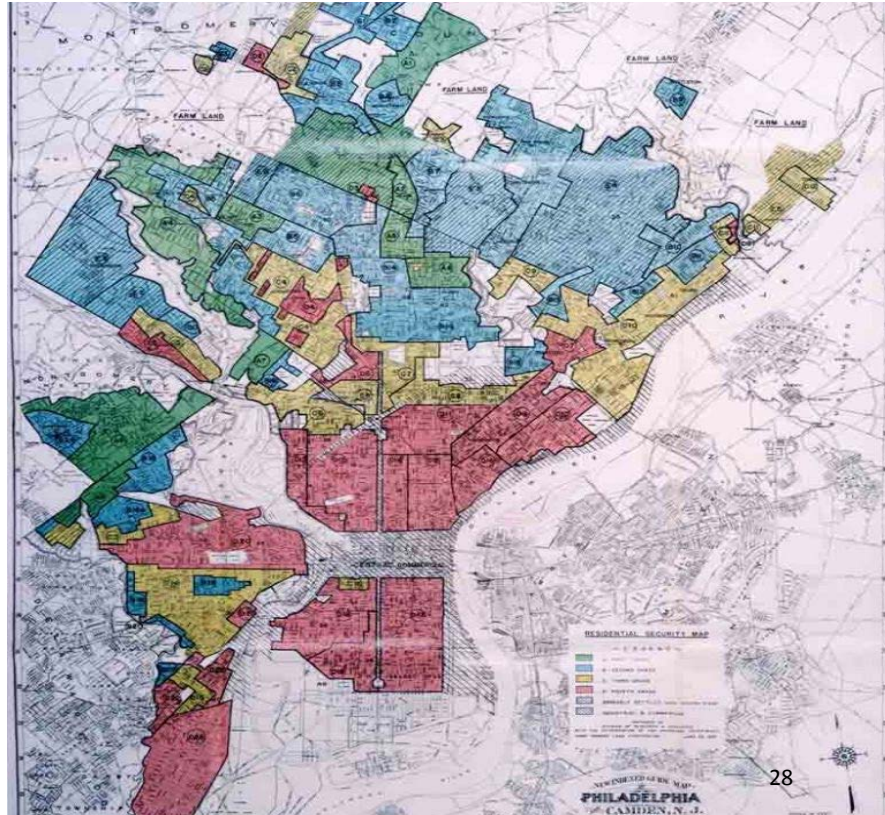
DIRECTED INTO LOW-INCOME NEIGHBORHOODS

- **Federal/state tax credits & grants**
 - Low Income Housing Tax Credit (LIHTC)
 - New Markets Tax Credit (NMTC)
 - Community Development Block Grants (CDBG)
 - Healthy Food Financing Initiative (HFFI)
- **Community Reinvestment Act dollars**
CRA-motivated loans and investments from private, for-profit banks

REDLINING

Community Reinvestment Act of 1977 (CRA)

Philadelphia, 1949



COMMUNITY DEVELOPMENT CORPORATIONS & AFFILIATES



4,600

of CDCs nationwide (2006)



75,000

Jobs created by CDC activities (2010)



Source: [Democracy Collaborative](#)

COMMUNITY DEVELOPMENT FINANCIAL INSTITUTIONS



958

government-certified CDFIs (2015)



1.56 Million

Square feet of healthy food retail financed (2015)



Source: [CDFI Fund Annual Report FY 2015](#)

COMMUNITY DEVELOPMENT IS IN THE LEVERAGING BUSINESS

\$15 MILLION RAISED IN CAPITAL CAMPAIGN

\$15 MILLION INVESTED IN AFFORDABLE HOUSING



\$15 MILLION AFFORDABLE HOUSING

\$15 MILLION RAISED IN CAPITAL CAMPAIGN

\$5 MILLION INVESTED IN AFFORDABLE HOUSING

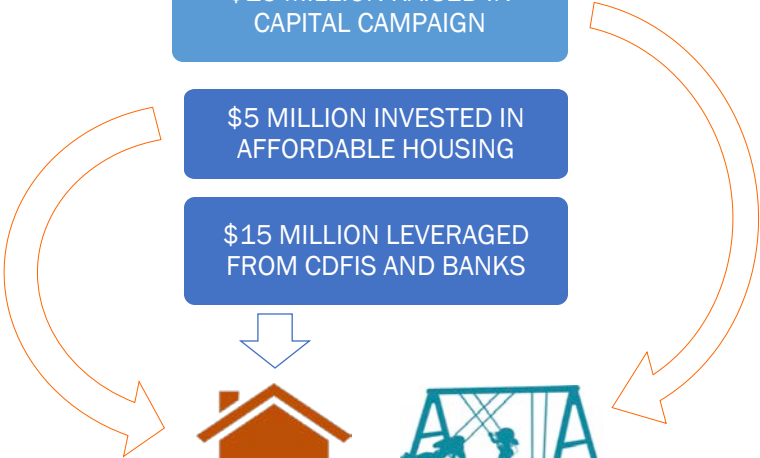
\$15 MILLION LEVERAGED FROM CDFIS AND BANKS



\$20 MILLION AFFORDABLE HOUSING



\$10 MILLION EARLY CHILDHOOD CENTER



The background features a stylized human figure composed of multiple orange rays of varying lengths radiating from a central point, creating a sunburst or starburst effect. The rays are arranged to form the outline of a person's head, shoulders, arms, and legs.

Innovative Cross-Sector Partnerships



SAN PABLO AVENUE CORRIDOR



EAST BAY ASIAN LOCAL
DEVELOPMENT CORPORATION

BUILDING HEALTHY, VIBRANT AND SAFE NEIGHBORHOODS



Alameda County Public Health Department
Celebrating Healthy People in Healthy Communities



HEALTH EQUITY ZONES





Resources: Diving Deeper and Taking Next Steps

By joining forces, community
developers and health professionals
can have a more powerful impact.

[Learn More About the Network](#)



The Pulse

A monthly roundup of what we're
reading and where we've been at
the intersection of community
development and health.

[View Past Issues](#)

[Sign Up](#)

Crosswalk Magazine

A gathering place for stories illustrating community investment—
creating neighborhoods that promote health and wellbeing for
all. Produced by the Build Healthy Places Network.

[Read more on BuildUP.com](#)

Partner Finder

Looking for partners in your local area? Check out our Partner

Healthy Communities Initiative



[Accountable Care Organization \(ACO\)](#)[Affordable Care Act \(ACA\)](#)[CDC \(Centers for Disease Control and Prevention\)](#)[CDC \(Community Development Corporation\)](#)[Community Benefits \(Agreements\)](#)[Community Benefits \(Hospital\)](#)[Community Development](#)[Community Development Financial Institutions \(CDFIs\)](#)[Community Health Assessment \(CHA\)](#)[Community Reinvestment Act](#)[Equitable Development](#)

Jargon Buster

Working across sectors begins with speaking the same language. If you're lost in a sea of acronyms, this tool can help. Below we aim to demystify common industry jargon.

Community Development



Related Terms: CDC (Community Development Corporation), Community Development Financial Institutions (CDFIs), Social Determinants of Health, Health Equity

Community development is a multi-billion-dollar sector of the American economy that invests in low- and moderate-income communities through the development and financing of affordable housing, businesses, community centers, health clinics, job training programs, and services to support children, youth, and families. The sector has its roots in the urban revitalization efforts of the late 19th century but expanded as a result of the War on Poverty programs of the 1960s. Today, the community development sector invests more than \$200 billion annually in low-income communities.



Welcome to Partner Finder

Welcome to Partner Finder, a collection of directories to help you find the community development and health organizations nearest to you. Partner Finder helps you take the first steps to identify potential cross-sector partners in improving the health and well being of your community.



NACCHO

National Association of County & City Health Officials



n.ceda

building prosperous communities together



N

National Network
of Public Health Institutes



NeighborWorks®

AMERICA



OPPORTUNITYFINANCE NETWORK



UNITED STATES FEDERAL RESERVE SYSTEM



Crosswalk



Whose City Is it? The Promise and Peril of Gentrification



What to Make of Social Impact Bonds



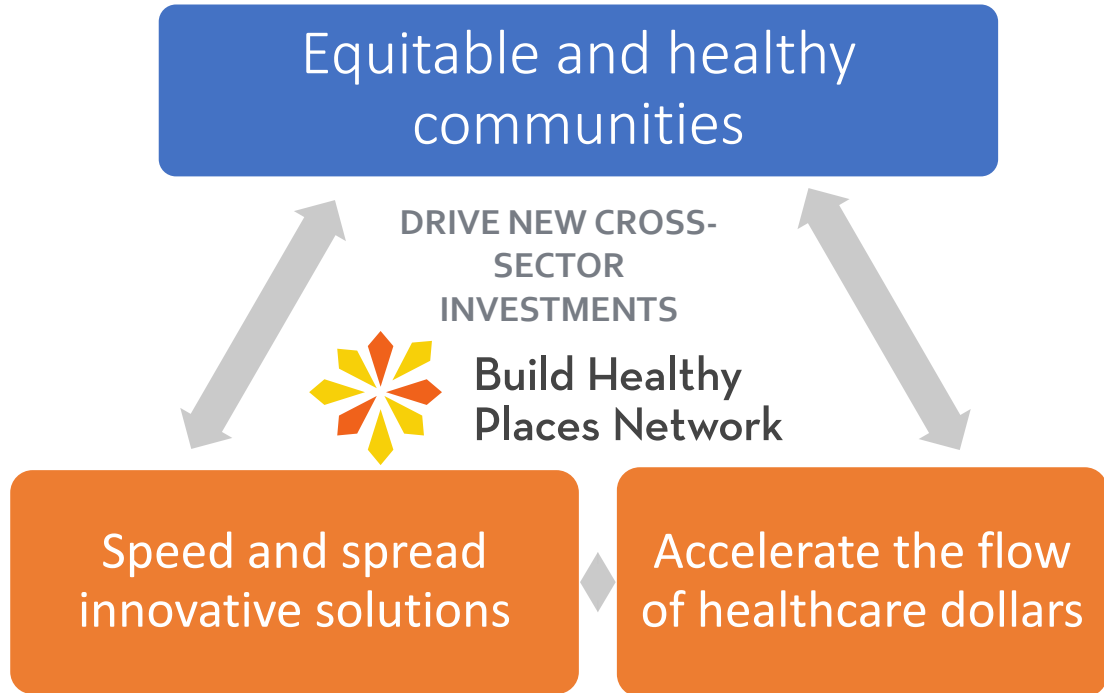
Investing With Health in Mind



From Treating the Ill to Preventing the Illness



Achieving Better Health through Better Partnerships





TAKEAWAYS

-
- Community Development is a Sector
-
- Community Development is Well-Positioned to Serve as a Partner in Health Equity
-
- Build Healthy Places Network is a Resource for Cross-Sector Collaboration



Build Healthy Places Network

www.BuildHealthyPlaces.org
[@BHPNetwork](https://twitter.com/BHPNetwork)

Daniel Lau,
Manager of Strategic Engagement
dlau@buildhealthyplaces.org

