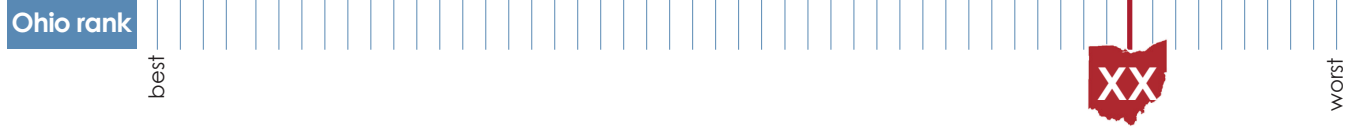


2019 Health Value Dashboard

POPULATION HEALTH



Ohio's rank	Metric	Most recent data	Trend
XX	Health behaviors		
37	Excessive drinking. Percent of adults that report either binge drinking, defined as consuming more than 4 (women) or 5 (men) alcoholic beverages on a single occasion in the past 30 days, or heavy drinking, defined as drinking more than one (women) or 2 (men) drinks per day on average (2017)	20.2%	No change
37	Youth all-tobacco use. Percent of youth ages 12-17 who used cigarettes, smokeless tobacco, cigars, or pipe tobacco during past 30 days (does not include e-cigarettes) (2016-2017)	6.8%	Moderately improved
40	Adult insufficient physical activity. Percent of adults 18 years and older not meeting physical activity guidelines for muscle strength and aerobic activity (2017)	81.7%	No change
44	Adult smoking. Percent of population age 18 and older that are current smokers (2017)	21.1%	No change
XX	Conditions and diseases		
20 <small>(out of 50)</small>	Suicide deaths. Number of deaths due to suicide, per 100,000 population, age-adjusted (2016)	14.2	No change
36	Adult depression. Percent of adults who have ever been told by a health professional that they have depression (2017)	22.6%	Moderately worsened
37	Adult diabetes. Percent of adults who have ever been told by a health professional that they have diabetes (2017)	11.3%	No change
39	Cardiovascular disease mortality. Number of deaths due to all cardiovascular diseases, including heart disease and strokes, per 100,000 population, age-adjusted (2016)	276.4	No change
41	Adult obesity. Percent of population age 18 and older that are obese (body mass index of 30 or higher) (2017)	33.8%	Greatly worsened
42	Poor oral health. Percent of adults ages 18-64 who have lost six or more teeth because of tooth decay, infection or gum disease (2016)	14%	No change
44	Infant mortality. Number of infant deaths per 1,000 live births (within 1 year) (2017*)	7.2*	No change
50	Drug overdose deaths. Number of deaths due to drug overdose, per 100,000 population (age adjusted) (2017)	38.6	Greatly worsened
XX	Overall health and wellbeing		
34	Overall health status. Percent of adults that report excellent, very good or good health (2017)	81.1%	Moderately worsened
36	Limited activity due to health problems. Average number of days in the previous 30 days when a person reports limited activity due to physical or mental health difficulties, ages 18 and older (2017)	1.8	Moderately worsened
42	Life expectancy. Life expectancy at birth based on current mortality data and population estimates (2016)	77.1	No change
43	Premature death. Average number of years of potential life lost before age 75 per 100,000 population (2017)	8,724	Moderately worsened

Top quartile
 Second quartile
 Third quartile
 Bottom quartile
 NR Not ranked

Of the 50 states and D.C.

Trend note: Improved or worsened refers to a change that exceeds one-half standard deviation in the metric's value from baseline year to most recent year. Changes that do not meet this threshold are marked "no change."

*2017 data is available for Ohio, but not for other states. 2016 data was used for rank and all other analysis.

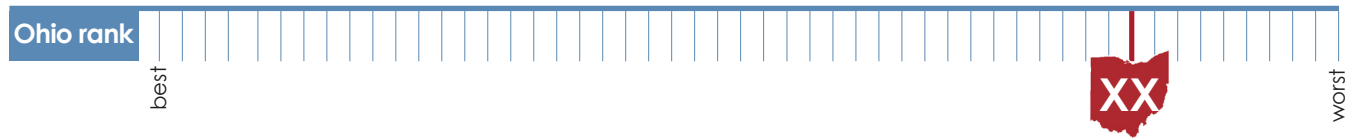
POPULATION HEALTH NARRATIVE

[COMING SOON] Graphics and narrative will be created

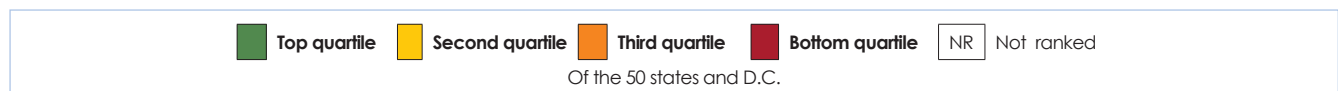


2019 Health Value Dashboard

HEALTHCARE SPENDING



Ohio's rank	Metric	Most recent data	Trend
XX	Total and out-of-pocket spending		
17	Out-of-pocket spending. Percent of individuals who are in families where out-of-pocket spending on health care, including premiums, accounts for more than 10 percent of annual income (2016)	20.5%	Moderately decreased
35	Total healthcare spending. Spending for all privately and publicly funded personal healthcare services and products, per capita (2014)	\$8,712	Moderately increased
XX	Private health insurance spending		
3	Employee contributions to employer-sponsored insurance premiums. Employee contributions to employer-sponsored health insurance premiums as a share of state median income (2016)	5%	No change
24	Private health insurance spending. Private health insurance spending on personal health care services and products, per enrollee (2014)	\$4,371	No change
28 (out of 49)	Employer-sponsored plan spending. Total employer-sponsored health insurance plan spending, per enrollee (2015)	\$4,770	No change
36	Average monthly marketplace premium. Average monthly marketplace premium after application of an advanced premium tax credit (2018)	\$220.42	No change
XX	Healthcare service area spending		
18	Prescription drug and medical nondurable spending. Retail sales of prescription and non-prescription drugs and medical products, per capita (2014)	\$1,023	No change
41	Hospital care spending. Spending for all hospital services provided to patients, per capita (2014)	\$3,809	No change
41	Nursing home care spending. Spending on nursing and rehabilitative services provided in freestanding nursing home facilities, per capita (2014)	\$605	No change
XX	Medicare spending		
22	Average total cost per Medicare beneficiary, without chronic conditions. Average total cost per Medicare beneficiary, without chronic conditions (2016)	\$3,946	Greatly increased
24	Average total cost per Medicare beneficiary, with one chronic condition	\$5,539	No change
22	Average total cost per Medicare beneficiary, with two chronic conditions	\$6,554	No change
39	Average total cost per Medicare beneficiary, with three or more chronic conditions	\$14,086	Moderately increased
39	Total Medicare spending, per beneficiary. Total Medicare reimbursements per Medicare beneficiary (Parts A and B), ages 65-99 (2015)	\$10,025	No change
XX	Medicaid spending		
23	Medicaid benefit spending, per enrollee. Average amount Medicaid spends per federal fiscal year per full-year equivalent enrollee, all Medicaid enrollees (FY 2017)	\$7,496	No change



Trend note: Improved or worsened refers to a change that exceeds one-half standard deviation in the metric's value from baseline year to most recent year. Changes that do not meet this threshold are marked "no change."

HEALTHCARE SPENDING NARRATIVE

[COMING SOON] Graphics and narrative to be created using the following data:

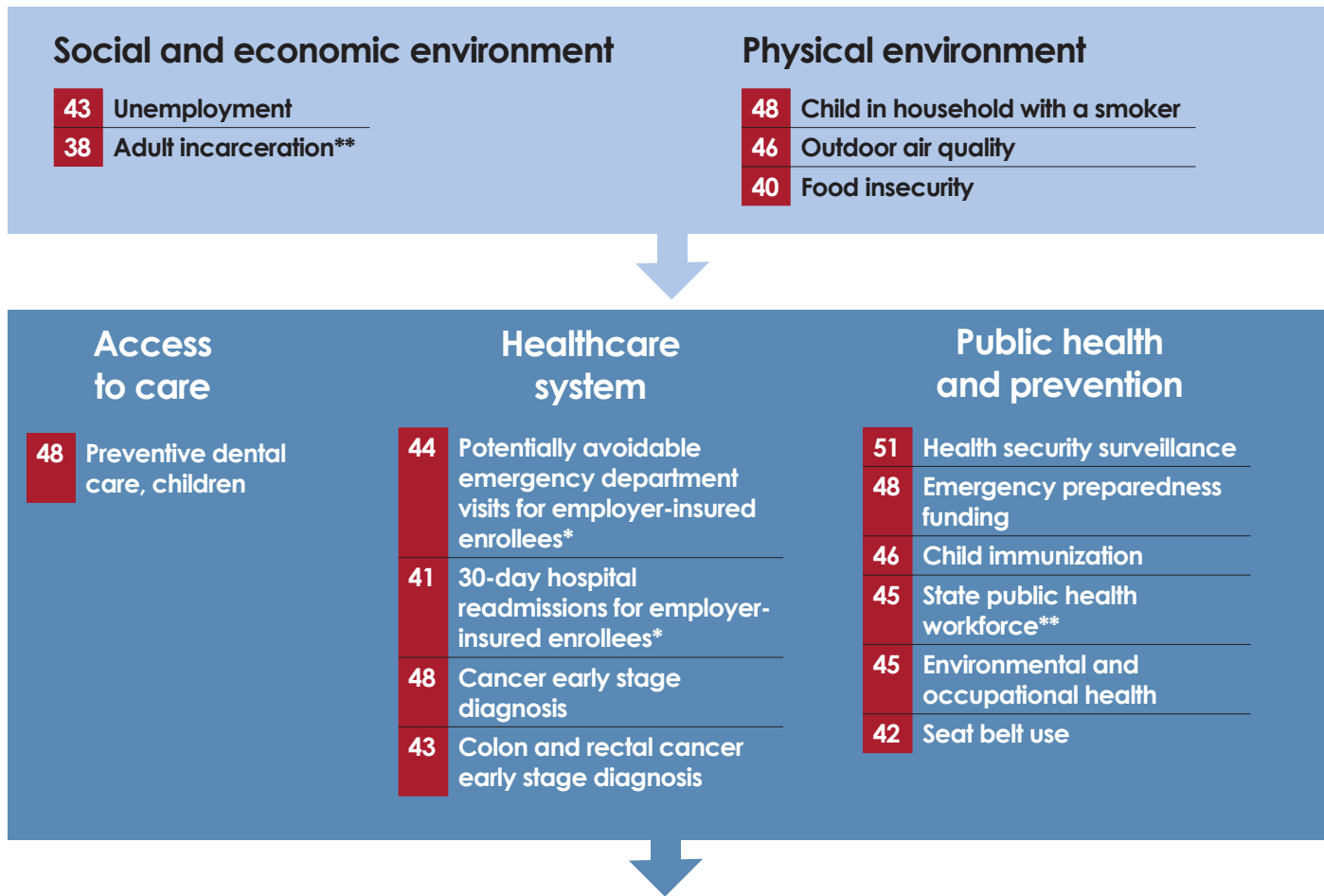
XX	Public and mental health spending		
N/A	State mental health agency spending. State Mental Health Agency spending on mental health services, per capita (FY 2013)	\$100.29	N/A
N/A	State public health funding. State public health funding during the fiscal year, per capita (2017)	\$12.46	N/A
N/A (Ohio only)	Local public health agency spending, per capita. Median annual local health department expenditures, per capita (2015)	\$35.74	N/A

XX	Medicaid spending		
N/A	Medicaid spending per enrollee, child. Average annual amount Medicaid spends per full-year equivalent child enrollee per federal fiscal year (FY2014)	\$2,589	N/A
N/A	Medicaid spending per enrollee, adult. Average amount Medicaid spends per full-year equivalent adult enrollee per federal fiscal year (FY2014)	\$4,017	N/A
N/A	Medicaid spending per enrollee, with disabilities. Average amount Medicaid spends per full-year equivalent enrollee with disabilities per federal fiscal year (FY2014)	\$18,682	N/A
N/A	Medicaid spending per enrollee, aged. Average amount Medicaid spends per full-year equivalent aged enrollee per federal fiscal year (FY2014)	\$18,218	N/A

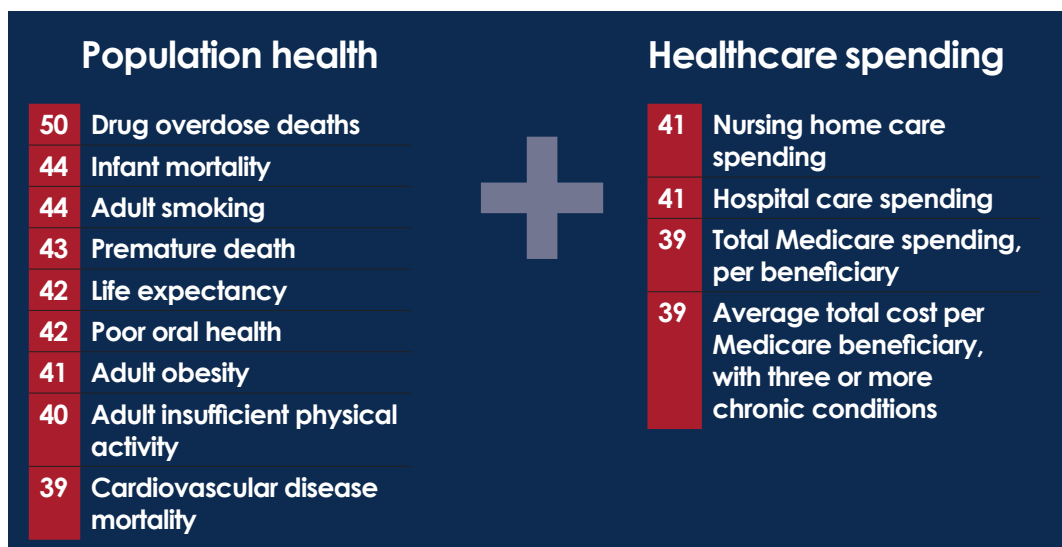


OHIO'S GREATEST HEALTH VALUE CHALLENGES

Bottom quartile metrics in the domains that contribute to health value



Bottom quartile metrics for health value



* Ranking out of 49 states
 ** Ranking out of 50 states

OHIO'S GREATEST HEALTH VALUE STRENGTHS

Top quartile metrics

Domain	Metric	Ohio's rank
Public health and prevention	Comprehensiveness of public health system	7 <small>(out of 48)</small>
Healthcare system	Heart failure readmissions for Medicare beneficiaries	7
	Back pain recommended treatment	13
Access to care	Medical home, children	11
Healthcare spending	Employee contributions to employer-sponsored insurance premiums	3

[COMING SOON] Graphics and narrative will be created

